

TMC2 - TMC2X - TC

Cable Connectors for MC-HL, TECK & Tray Cable



CMP PRODUCTS





A revolutionary sealing solution for barrier glands that also delivers increased reliability



is a Liquid Pour, Fast Curing, Liquid Resin Seal that installs in seconds and cures in minutes. Its unique formula begins with a low viscosity liquid that flows into the cable interstices completely surrounding the cable conductors, driving out the air in the process. The viscosity then increases and completely cures in minutes, dependant on ambient temperature.



RapidEx benefits



is a revolutionary sealing system that gets right to the heart of the cable interstices and can be reliably installed in no time at all.

- Simple cable preparation,
- Easy liquid pour RapidEx resin application,
- Cleaner, faster mixing process,
- High consistency of liquid pour fill,
- Fully compatible with IEC & CEC / NEC wiring code rules,
- Thermal endurance / age tested to IEC 60079-0:2007,
- Explosion pressure tested to IEC 60079-1:2007, CSA-C 22.2 and UL 2225,
- No need for repeated cable gland disassembly before connection to equipment,
- Faster RapidEx curing time, allowing earlier energizing of equipment,
- Enhanced accuracy, improved reliability.



Ease of application

During application the liquid resin flows between and around the cable conductors ensuring a complete and total seal with zero gaps.

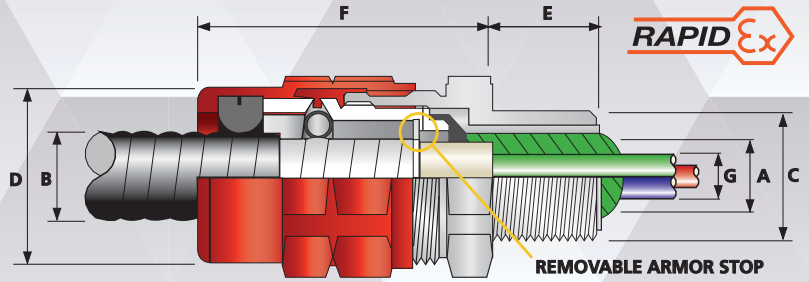
In the process of curing the RapidEx resin adheres to both the cable conductors and the inside of the barrier tube creating a bond that is set for the life of the cable gland product. The RapidEx seal will never crack or shrink with changes in temperature.

Faster curing

RapidEx liquid pour resin cures approximately 15 times faster than traditional clay based compound. RapidEx cures in 15 minutes at 40°C, and 30 minutes at 20°C.

Enhanced reliability

RapidEx offers users a combination of advantages not least of which is the enhanced reliability that the product delivers in ensuring that the form of equipment protection is not compromised in anyway.



TMC2X CABLE CONNECTOR

TMC2X Wet & Hazardous Location Cable Connector

CMP Type TMC2X Cable Connector is suitable for use with Interlocked & Corrugated Continuously Welded Metal Clad (Type MC or MC-HL) or TECK armored and armored & jacketed cables in, wet & hazardous locations including:

- Certified to cCSAus, ATEX (EN) & IECEx Standards
- Class I Division 1 & Class 1 Division 2 ABCD
- Class I Zone 1 AExd/AExe, Exd/Exe, in accordance with NEC/CEC installations
- Class I Zone 1 Exd IIC, Exe II for IECEx & ATEX installation codes
- Ingress Protection to Nema 4X & IP66

All CMP Cable Connectors are EMC Tested.

The TMC2X utilizes CMP's innovative RapidEx Fast Curing Liquid Resin Injection System, which installs in seconds, significantly reducing installation error, with a complete 100% cure time of 1 hour, which significantly reduces installation times.

The 2-part design allows the grounding and over jacket sealing to be carried out in a single simple movement and allows the cable to be easily removed from the equipment, for maintenance and change out etc. The TMC2X cable connector is supplied in Copper Free (<0.4%) Aluminum, Stainless Steel, or Electroless Nickel Plated Brass in NPT (standard) and Metric thread forms.

Optional TMC2XBC for single conductor cables.



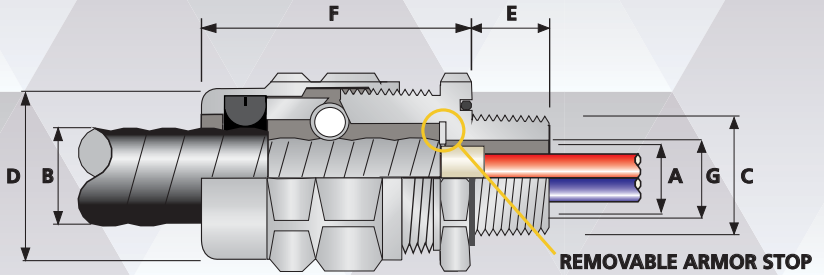
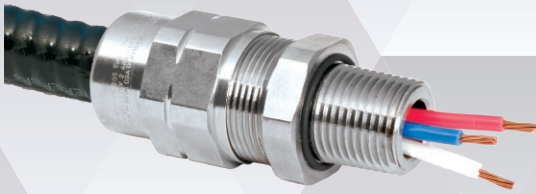
Cable Connector Selection Table

Refer to illustration at the top of the page

TECHNICAL DATA	
Type	TMC2X
Design Specification	EN 50262, BS 6121:Part 1:1989, IEC 62444
Mechanical Classification	Impact = Level 8, Retention = Class B (EN 50262), Class D (IEC 62444)
Electrical Classification	Category B
ATEX Certificate	SIRA09ATEX1165X
Code of Protection	⊕ II 2 GD, Ex d IIC, Ex e IIC Gb, Ex ta IIIC Da
IEC Ex Certificate	IECEX SIR 09.0069X
Code of Protection	Ex d IIC Gb / Ex e IIC Gb, Ex ta IIIC Da
Compliance Standards	EN 60079-0-1,7, EN 61241-1, IEC 60079-0-1,7, IEC 61241-1
cCSAus Certificate	2194053
Code of Protection	Class I, Div 1 and 2, Groups A, B, C and D; Class II, Div 1 and 2, Groups E, F, and G; Class III, Div 1 and 2; Encl. Type 4X. Ex d IIC; Ex e II: Class I, Zone 1, AEx d IIC; AEx e II; AEx ta IIC:
Compliance Standards	CAN/CSA-C22.2 No 0-M91, CAN/CSA-C22.2 No 18-04, CAN/CSA-C22.2 No 25-1966, CAN/CSA-C22.2 No 30-M1986, CAN/CSA-C22.2 No.174-M1984, CAN/CSA-C22.2 No.94-M91, CAN/CSA-E60079-0:07, CAN/CSA-E60079-7:07, CAN/CSA-E60079-1:07, CAN/CSA-E61241-1-1, ANSI/UL 514B Edition 5, ANSI/UL 50 Edition 11, ANSI/UL 2225 Edition 4
EAC Certificate (Formally GOST R, K & B)	TC RU C-GB.ГБ05.В00138
Code of Protection	1Ex d IIC Gb X, 1Ex e IIC Gb X, 2Ex nR IIC Gc X, Ex ta IIIC Da X
Compliance Standards	ГОСТ P 52350. 7, ГОСТ P МЭК 60079-0-1,15,31, ГОСТ IEC 60079-1,7, ГОСТ 31610.7
CCOE / PESO (India) Certificate	P333688/1
RETIE Approval Number	03866
Marine Approvals	LRS: 01/00172, DNV: E-13286, ABS: 10-HS630287
Continuous Operating Temperature	-60°C to +85°C
Ingress Protection Rating	Nema 4X & IP66
Cable Type	Corrugated & Interlocked Metal Clad Armor (MC) or TECK90, Continuously Welded Metal Clad Armor (MCHL), ACIC-HL, ACWU90-HL, RC90-HL, RA90-HL
Armor Clamping	360° Stainless Steel Grounding Spring (beryllium copper optional)
Jacket Sealing Technique	CMP Load Retention Seal
Sealing Area(s)	RapidEx Liquid Resin, Cable Outer Jacket
Cable Connector Material	Copper Free (<0.4%) Aluminum, Stainless Steel, Electroless Nickel Plated Brass
Accessories	Adaptor/Reducer, Earth Tag, Locknut, Grounding Locknut, Serrated Washer, Shroud

Order Reference (NPT)			Entry Thread "C"		Minimum Thread Length "E"	Cable Armor Diameter "A"				Cable Jacket Diameter "B"		Max Over Conductors "G"	Across Flats "D"		Across Corners "D"		Nominal Assembly Length "F"	Gland Size	RapidEx Order Ref	Approx Weight Aluminum (Ozs)
Aluminum	Nickel Plated Brass	Stainless Steel	NPT	NPT Option		Armor Stop In		Armor Stop Out		Min	Max		Max	Max	Max	Max				
						Min	Max	Min	Max											
TMC2X-050A075	TMC2X-050NB075	TMC2X-050SS075	1/2"	-	0.78	0.42	0.57	0.57	0.63	0.500	0.750	0.51	1.200	1.300	1.650	20S	RAPIDEX30	2.290		
TMC2X-075A075	TMC2X-075NB075	TMC2X-075SS075	-	3/4"	0.80	0.42	0.57	0.57	0.63	0.690	0.990	0.51	1.480	1.600	1.970	20	RAPIDEX30	3.000		
TMC2X-075A099	TMC2X-075NB099	TMC2X-075SS099	3/4"	-	0.80	0.60	0.78	0.78	0.89	0.870	1.180	0.71	1.810	1.950	2.130	25	RAPIDEX30	5.110		
TMC2X-050A099	TMC2X-050NB099	TMC2X-050SS099	-	1/2"	0.78	-	-	0.60	0.89	0.870	1.180	0.71	1.810	1.950	2.130	25	RAPIDEX30	5.110		
TMC2X-100A118	TMC2X-100NB118	TMC2X-100SS118	1"	-	0.98	0.79	1.01	1.01	1.10	1.020	1.370	1.20	2.050	2.210	2.340	32	RAPIDEX30	6.700		
TMC2X-075A118	TMC2X-075NB118	TMC2X-075SS118	-	3/4"	0.80	-	-	0.79	1.10	1.020	1.370	1.20	2.050	2.210	2.340	32	RAPIDEX30	6.700		
TMC2X-125A137	TMC2X-125NB137	TMC2X-125SS137	1-1/4"	-	1.00	0.94	1.20	1.20	1.28	1.020	1.370	1.20	2.050	2.210	2.340	32	RAPIDEX30	6.700		
TMC2X-100A137	TMC2X-100NB137	TMC2X-100SS137	-	1"	0.98	0.94	1.00	1.00	1.28	1.300	1.620	1.46	2.360	2.550	2.440	40S	RAPIDEX80	8.820		
TMC2X-150A162	TMC2X-150NB162	TMC2X-150SS162	1-1/2"	-	1.03	-	-	1.43	1.50	1.300	1.620	1.46	2.360	2.550	2.440	40S	RAPIDEX80	8.820		
TMC2X-125A162	TMC2X-125NB162	TMC2X-125SS162	-	1-1/4"	1.00	1.22	1.25	1.25	1.50	1.300	1.620	1.20	2.360	2.550	2.440	40S	RAPIDEX80	8.820		
TMC2X-150A190	TMC2X-150NB190	TMC2X-150SS190	1-1/2"	-	1.03	-	-	1.49	1.72	1.570	1.900	1.46	2.560	2.760	2.440	40	RAPIDEX30	9.450		
TMC2X-125A190	TMC2X-125NB190	TMC2X-125SS190	-	1-1/4"	1.00	-	-	1.49	1.72	1.570	1.900	1.20	2.560	2.760	2.440	40	RAPIDEX30	9.450		
TMC2X-200A200	TMC2X-200NB200	TMC2X-200SS200	2"	-	1.53	1.57	1.70	1.70	1.88	1.650	2.000	1.63	2.750	2.970	2.600	50S	2RAPIDEX80	11.060		
TMC2X-150A200	TMC2X-150NB200	TMC2X-150SS200	-	1-1/2"	1.03	-	-	1.52	1.88	1.650	2.000	1.46	2.750	2.970	2.600	50S	RAPIDEX80	11.060		
TMC2X-250A233	TMC2X-250NB233	TMC2X-250SS233	2-1/2"	-	1.63	1.79	2.09	2.09	2.21	1.910	2.330	1.46	2.950	3.190	2.640	63S	RAPIDEX80	12.770		
TMC2X-200A233	TMC2X-200NB233	TMC2X-200SS233	-	2"	1.53	1.79	1.97	1.97	2.21	1.910	2.330	1.90	2.950	3.190	2.640	63S	2RAPIDEX80	12.770		
TMC2X-300A272	TMC2X-300NB272	TMC2X-300SS272	3"	-	1.63	2.14	2.50	2.50	2.61	2.270	2.720	2.13	3.540	3.820	2.760	75	2RAPIDEX80	24.690		
TMC2X-250A272	TMC2X-250NB272	TMC2X-250SS272	-	2-1/2"	1.63	2.14	2.44	2.44	2.61	2.270	2.720	1.90	3.540	3.820	2.760	75	2RAPIDEX80	24.690		
TMC2X-350A325	TMC2X-350NB325	TMC2X-350SS325	3-1/2"	-	1.68	2.49	2.80	2.80	2.97	2.620	3.250	2.37	4.330	4.680	3.460	90	3RAPIDEX80	42.680		
TMC2X-300A325	TMC2X-300NB325	TMC2X-300SS325	-	3"	1.63	2.49	2.80	2.80	2.97	2.620	3.250	2.55	4.330	4.680	3.460	90	2RAPIDEX80	42.680		
TMC2X-400A376	TMC2X-400NB376	TMC2X-400SS376	4"	-	1.73	2.95	3.49	3.49	3.54	3.160	3.760	2.98	4.840	5.230	3.680	100	4RAPIDEX80	53.440		
TMC2X-350A376	TMC2X-350NB376	TMC2X-350SS376	-	3-1/2"	1.68	2.95	3.49	3.49	3.54	3.160	3.760	3.38	4.840	5.230	3.680	100	3RAPIDEX80	53.440		
TMC2X-400A425	TMC2X-400NB425	TMC2X-400SS425	4"	-	1.73	-	-	3.52	3.94	3.700	4.250	3.38	5.230	5.650	3.890	115	4RAPIDEX80	59.190		

Order Code Example: TMC2X-050A075 - "TMC2X" (Gland Type) - "050" (1/2" NPT Thread) - "A" (Material Aluminum) - "075" (Max Cable Diameter 0.75")



TMC2 CABLE CONNECTOR

TMC2 Ordinary, Wet & Hazardous Location Cable Connector

CMP Type TMC2 Cable Connector suitable for use with Interlocked & Continuously Welded Metal Clad (Type MC or MC-HL) or TECK armored & jacketed cables in ordinary, wet & hazardous locations including:

- Certified to cCSAus, ATEX (EN) & IECEx Standards
- Class I Division 2, where permitted by code
- Class 1 Zone 1 AEx e and Ex e, where permitted by code
- Class 1 Zone 1 Ex e (IEC/Atex)
- Ingress Protection to Nema 4X & IP66

All CMP Cable Connectors are EMC Tested.

The 2-part design allows the grounding and over jacket sealing to be carried out in a single simple movement and allows the cable to be easily removed from the equipment, for maintenance and change out etc.

The TMC2 cable connector is supplied in Copper free (<0.4%), Aluminum, Stainless Steel, or Electroless Nickel Plated Brass in NPT (standard) and Metric thread forms.

Optional TMC2BC for single conductor cables.



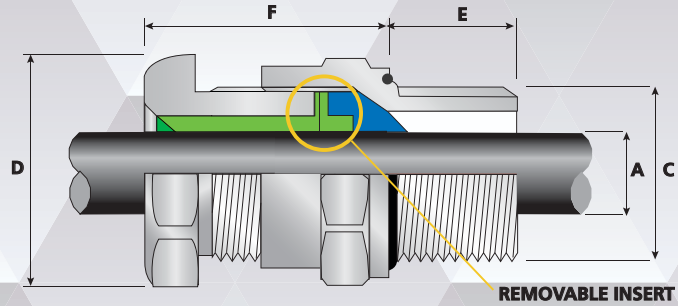
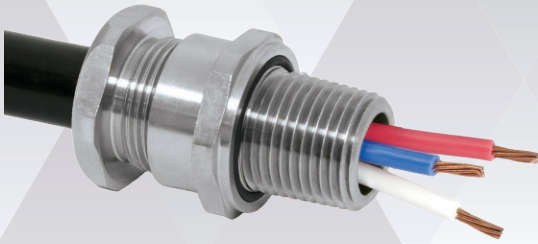
Cable Connector Selection Table

Refer to illustration at the top of the page

TECHNICAL DATA	
Type	TMC2
Design Specification	EN 50262, BS 6121:Part 1:1989, IEC 62444
ATEX Certificate	SIRA09ATEX1164X
Code of Protection	⊕ II 2GD, Ex e IIC Gb, Ex ta IIIC Da
Compliance Standards	EN 60079-0,1,7, EN 61241-0,1
IEC Ex Certificate	IECEx SIR 09.0068X
Code of Protection	Ex e IIC Gb, Ex ta IIIC Da
Compliance Standards	IEC 60079-0,1,7, IEC 61241-0,1
cCSAus Certificate	2194053
Code of Protection	Class I, Div 2, Groups A, B, C & D; Class II, Div 1 & 2, Groups E, F, & G; Class III, Div 1 & 2; Encl. Type 4X. Ex e II; Class I, Zone 1, AEx e II; AEx ta IIC:
Compliance Standards	CAN/CSA-C22.2 Various Sections (See Certificate) CAN/CSA-E60079-0,7, CAN/CSA-E61241-1-1, ANSI/UL 514B Ed 5, ANSI/UL 50 Ed 11
EAC Certificate (Formally GOST R, K & B)	TC RU C-GB.FE05.B00138
Code of Protection	1Ex e IIC Gb X, Ex ta IIIC Da X
Compliance Standards	ГОСТ P 52350. 7, ГОСТ P MЭК 60079-0,15,31 , ГОСТ IEC 60079-7 , ГОСТ 31610.7
CCOE / PESO (India) Certificate	P333688/1
RETIE Approval Number	03866
Marine Approvals	LRS: 01/00172, DNV: E-13286, ABS: 10-HS630287
Continuous Operating Temperature	-60°C to +110°C
Ingress Protection Rating	Nema 4X & IP66
Cable Type	Corrugated & Interlocked Metal Clad Armor (MC) or TECK90, Continuously Welded Metal Clad Armor (MCHL), ACIC-HL, ACWU90-HL, RC90-HL, RA90-HL
Armour Clamping	360° Stainless Steel Grounding Spring (beryllium copper optional)
Jacket Sealing Technique	CMP Load Retention Seal
Sealing Area(s)	Cable Outer Jacket
Seal Material	CMP SOLO LSF Thermoset Rubber
Cable Connector Material	Copper Free (<0.4%) Aluminum, Stainless Steel, Electroless Nickel Plated Brass
Accessories	Adaptor/Reducer, Earth Tag, Locknut, Grounding Locknut, Serrated Washer, Shroud

Order Reference (NPT)			Entry Thread "C"		Minimum Thread Length "E"	Cable Armor Diameter "A"				Cable Jacket Diameter "B"		Thru Bore "G"	Across Flats "D"	Across Corners "D"	Nominal Assembly Length "F"	Approx Weight Aluminum (Ozs)
Aluminum	Nickel Plated Brass	Stainless Steel	NPT	NPT Option		Armor Stop In		Armor Stop Out		Min	Max					
						Min	Max	Min	Max							
TMC2-050A075	TMC2-050NB075	TMC2-050SS075	1/2"	-	0.78	0.42	0.55	0.55	0.63	0.500	0.750	0.55	1.200	1.300	1.650	2.290
TMC2-075A075	TMC2-075NB075	TMC2-075SS075	-	3/4"	0.80	0.42	0.55	0.55	0.63			0.55				
TMC2-075A099	TMC2-075NB099	TMC2-075SS099	3/4"	-	0.80	0.60	0.65	0.65	0.89	0.690	0.990	0.65	1.480	1.600	1.970	3.000
TMC2-050A099	TMC2-050NB099	TMC2-050SS099	-	1/2"	0.78	0.60	0.78	0.78	0.89			0.78				
TMC2-100A118	TMC2-100NB118	TMC2-100SS118	1"	-	0.98	0.79	0.86	0.86	1.10	0.870	1.180	0.86	1.810	1.950	2.130	5.110
TMC2-075A118	TMC2-075NB118	TMC2-075SS118	-	3/4"	0.80	0.79	0.98	0.98	1.10			0.98				
TMC2-125A137	TMC2-125NB137	TMC2-125SS137	1-1/4"	-	1.00	0.94	1.08	1.08	1.28	1.020	1.370	1.08	2.050	2.210	2.340	6.700
TMC2-100A137	TMC2-100NB137	TMC2-100SS137	-	1"	0.98	0.94	1.18	1.18	1.28			1.18				
TMC2-150A162	TMC2-150NB162	TMC2-150SS162	1-1/2"	-	1.03	1.22	1.35	1.35	1.50	1.300	1.620	1.35	2.360	2.550	2.440	8.820
TMC2-125A162	TMC2-125NB162	TMC2-125SS162	-	1-1/4"	1.00	1.22	1.42	1.42	1.50			1.42				
TMC2-150A190	TMC2-150NB190	TMC2-150SS190	1-1/2"	-	1.03	-	-	1.51	1.72	1.570	1.900	1.51	2.560	2.760	2.440	9.450
TMC2-125A190	TMC2-125NB190	TMC2-125SS190	-	1-1/4"	1.00	-	-	1.51	1.72			1.51				
TMC2-200A200	TMC2-200NB200	TMC2-200SS200	2"	-	1.53	1.57	1.70	1.70	1.88	1.650	2.000	1.70	2.750	2.970	2.600	11.060
TMC2-150A200	TMC2-150NB200	TMC2-150SS200	-	1-1/2"	1.03	1.57	1.70	1.70	1.88			1.70				
TMC2-250A233	TMC2-250NB233	TMC2-250SS233	2-1/2"	-	1.63	-	-	1.81	2.21	1.910	2.330	1.81	2.950	3.190	2.640	12.770
TMC2-200A233	TMC2-200NB233	TMC2-200SS233	-	2"	1.53	-	-	1.81	2.21			1.81				
TMC2-300A272	TMC2-300NB272	TMC2-300SS272	3"	-	1.63	-	-	2.17	2.61	2.270	2.720	2.17	3.540	3.820	2.760	24.690
TMC2-250A272	TMC2-250NB272	TMC2-250SS272	-	2-1/2"	1.63	2.14	2.46	2.46	2.61			2.46				
TMC2-350A325	TMC2-350NB325	TMC2-350SS325	3-1/2"	-	1.68	2.49	2.78	2.78	2.97	2.620	3.250	2.78	4.330	4.680	3.460	42.680
TMC2-300A325	TMC2-300NB325	TMC2-300SS325	-	3"	1.63	2.49	2.78	2.78	2.97			2.78				
TMC2-400A376	TMC2-400NB376	TMC2-400SS376	4"	-	1.73	2.95	3.45	3.45	3.54	3.160	3.760	3.45	4.840	5.230	3.680	53.440
TMC2-350A376	TMC2-350NB376	TMC2-350SS376	-	3-1/2"	1.68	2.95	3.45	3.45	3.54			3.45				
TMC2-400A425	TMC2-400NB425	TMC2-400SS425	4"	-	1.73	-	-	3.56	3.94	3.700	4.250	3.56	5.230	5.650	3.890	59.190

Order Code Example: TMC2-050A075 - "TMC2" (Type Gland) - "050" (1/2" NPT Thread) - "A" (Material Aluminum) - "075"(Max Cable Diameter 0.75")



TC CABLE CONNECTOR

TC Ordinary, Wet & Hazardous Location Cable Connector

CMP Type TC Cable Connector is suitable for use with type (TC) tray cable in ordinary, wet, and hazardous locations including:

- Class I Division 2, where permitted by code
- Class 1 Zone 1 AEx e and Ex e, where permitted by code
- Ingress Protection to Nema 4X and IP66, 67 & 68

The unique use of the seal insert, enables each gland size to terminate the widest range available in a single hub size.

The TC cable connector is supplied in Copper free (<0.4%) Aluminum, Stainless Steel, or Electroless Nickel Plated Brass in NPT thread forms.

TECHNICAL DATA	
Type	TC
Design Specification	EN 50262, BS 6121:Part 1:1989, IEC 62444
ATEX Certificate	SIRA09ATEX1092X
Code of Protection	⊕ II 2 GD, Ex d IIC Gb, Ex e IIC Gb, Ex ta IIIC Da
Compliance Standards	EN 60079-0,1,7, EN 61241-0,1
IEC Ex Certificate	IECEX SIR 09.0042X
Code of Protection	Ex IIC Gb, Ex e IIC Gb, Ex ta IIIC Da
Compliance Standards	IEC 60079-0,1,7, IEC 61241-1
cSAus Certificate	2220601
Code of Protection	Class I, Div. 2, Groups A, B, C and D; Class II, Div. 2, Groups E, F, and G; Class III, Div. 2; Encl. Type 4X. Ex e; Class I, Zone 1, AEx e:
Compliance Standards	CAN/CSA-C22.2 Various Sections (See Certificate) CAN/CSA-E60079-0,7, CAN/CSA-E61241-1-1, ANSI/UL 514B Ed 5, ANSI/UL 50Ed 11, ANSI/UL 60079-0,7
EAC Certificate	TC RU C-GB.ГБ05.В00138
Code of Protection	1Ex d IIC Gb X, 1Ex e IIC Gb X, Ex ta IIIC Da X
Compliance Standards	ГОСТ Р 52350.7, ГОСТ Р МЭК 60079-0,15,31,1, ГОСТ IEC 60079-1,7, ГОСТ 31610.7
RETIE Approval Number	03866
Marine Approvals	LRS: 01/00172, DNV: E-10496, ABS: 10-H5630287
Continuous Operating Temperature	-60°C to +110°C
Ingress Protection Rating	Nema 4X and IP66/67/68
Cable Connector Material	Copper Free (<0.4%) Aluminum, Stainless Steel, or Electroless Nickel Plated Brass
Cable Type	Tray Cable & Cords, Unarmored / Braid (IEC)
Sealing Technique	CMP Displacement Seal
Sealing Area(s)	Cable Outer Jacket
Accessories	Adaptor/Reducer, Earth Tag, Locknut, Grounding Lock Nut, Serrated Washer, Shroud



Cable Connector Selection Table

Refer to illustration at the top of the page

Order Reference (NPT)			Entry Thread "C"		Minimum Thread Length "E"	Cable Range "A"				Across Flats "D"	Across Corners "D"	Nominal Assembly Length "F"	Approx Weight Aluminum (ozs)
Aluminum	Nickel Plated Brass	Stainless Steel	NPT	NPT Option		Insert		No Insert					
						Min	Max	Min	Max				
TC-050A028	TC-050NB028	TC-050SS028	1/2"	-	0.78	0.130	0.280	N/A	N/A	1.200	1.320	0.790	1.94
TC-075A028	TC-075NB028	TC-075SS028	-	3/4"	0.80								
TC-050A055	TC-050NB055	TC-050SS055	1/2"	-	0.78	0.260	0.410	0.410	0.550	1.200	1.320	0.790	1.69
TC-075A055	TC-075NB055	TC-075SS055	-	3/4"	0.80								
TC-075A079	TC-075NB079	TC-075SS079	3/4"	-	0.80	0.470	0.610	0.610	0.790	1.480	1.628	0.980	3.17
TC-100A079	TC-100NB079	TC-100SS079	-	1"	0.98								
TC-100A104	TC-100NB104	TC-100SS104	1"	-	0.98								
TC-125A104	TC-125NB104	TC-125SS104	-	1-1/4"	1.00	0.670	0.850	0.850	1.040	1.810	1.991	0.980	3.88
TC-125A127	TC-125NB127	TC-125SS127	1-1/4"	-	1.00	0.920	1.100	1.100	1.270	2.050	2.255	1.180	4.94
TC-150A127	TC-150NB127	TC-150SS127	-	1-1/2"	1.03								
TC-150A150	TC-150NB150	TC-150SS150	1-1/2"	-	1.03	1.220	1.370	1.370	1.500	2.360	2.596	1.260	6.00
TC-200A150	TC-200NB150	TC-200SS150	-	2"	1.06								
TC-200A174	TC-200NB174	TC-200SS174	2"	-	1.06			1.400	1.740	2.950	3.245	1.260	8.64
TC-250A174	TC-250NB174	TC-250SS174	-	2"	1.06								
TC-200A197	TC-200NB197	TC-200SS197	2"	-	1.06			1.630	1.970	2.950	3.245	1.650	8.29
TC-250A197	TC-250NB197	TC-250SS197	-	2-1/2"	1.53								
TC-250A220	TC-250NB220	TC-250SS220	2-1/2"	-	1.53			1.860	2.200	3.540	3.894	1.650	13.58
TC-300A220	TC-300NB220	TC-300SS220	-	2-1/2"	1.53								
TC-250A244	TC-250NB244	TC-250SS244	2-1/2"	-	1.53			2.130	2.440	3.540	3.894	1.690	13.58
TC-300A244	TC-300NB244	TC-300SS244	-	3"	1.63								
TC-300A268	TC-300NB268	TC-300SS268	3"	-	1.63								
TC-350A268	TC-350NB268	TC-350SS268	-	3-1/2"	1.68			2.400	2.680	4.330	4.763	1.690	23.63
TC-350A315	TC-350NB315	TC-350SS315	3-1/2"	-	1.68								
TC-400A315	TC-400NB315	TC-400SS315	-	4"	1.73			2.620	3.150	4.840	5.324	2.280	34.22
TC-400A354	TC-400NB354	TC-400SS354	4"	-	1.73			2.990	3.540	5.250	5.775	2.280	38.80

Order Code Example: TC-050A028 - "TC" (Type Gland) - "050" (1/2" NPT Thread) - "A" (Material Aluminum) - "028"(Max Cable Diameter 0.28")

**NEWCASTLE (Headquarters)**

Tel: +44 (0) 191 2657411
 Fax: +44 (0) 1670 715 646
 E-Mail: cmp@cmp-products.com
CMP Products
 36, Nelson Way, Nelson Park East
 Cramlington, Northumberland
 NE23 1WH, United Kingdom

**HOUSTON (Texas Inc)**

Tel: +281 776 5201
 Fax: +281 776 5223
 E-Mail: houstonoffice@cmp-products.com
CMP Products Texas Inc
 5222 N. Sam Houston Pkwy E.
 Houston, Texas, 77032, USA

**PERTH, WA**

Tel: +61 8 9249 4508
 Fax: +61 8 9249 4608
 E-Mail: perthoffice@cmp-products.com
CMP Products Pty Ltd
 Unit 3-22 Harland Avenue, Malaga, WA 6090
 Australia

BRISBANE, QLD

Tel: +61 7 3801 0301
 Fax: +61 7 3801 0300
 E-Mail: qldoffice@cmp-products.com
CMP Products Pty Ltd
 Unit 2 / 1-5 Knobel Court, Shailer Park, QLD 4128
 Australia

**DUBAI**

Tel: +971 4 887 1012
 Fax: +971 4 887 1015
 E-Mail: meoffice@cmp-products.com
CMP Products Middle East Office
 P.O. Box 61363, Jebel Ali Free Zone
 Jebel Ali, Dubai, United Arab Emirates

**PUSAN**

Tel: +82 51 780 5300
 Fax: +82 51 780 8348
 E-Mail: pusanoffice@cmp-products.com
CMP Products (Korea) Ltd
 19F Rm1915 Centum IS Tower, #1209,
 Jaesong1-dong, Haeundae-gu, Busan,
 South Korea, 612051

**SINGAPORE**

Tel: +65 6466 6180
 Fax: +65 6466 9891
 E-Mail: seaoffice@cmp-products.com
CMP Products (S.E.A) Pte Ltd.
 21 Toh Guan Road East, #09-03,
 Toh Guan Centre, Singapore 608609

**SHANGHAI**

Tel: +86 21 6093 2633
 Fax: +86 21 6093 2630
 E-Mail: shanghaioffice@cmp-products.com
CMP Products Division
 Room 304, Building 7, No.1888 XinJinqiao Road
 Pudong, Shanghai 201206, P.R. China

**JOHANNESBURG**

Tel: +27 (0)79 866 2171
 Fax: +27 (0)86 554 3240
 E-Mail: africaoffice@cmp-products.com
CMP Products
 49 New Road, Block A, Ground Floor
 Midrand, 1685, Johannesburg, S.A

**CMP PRODUCTS**